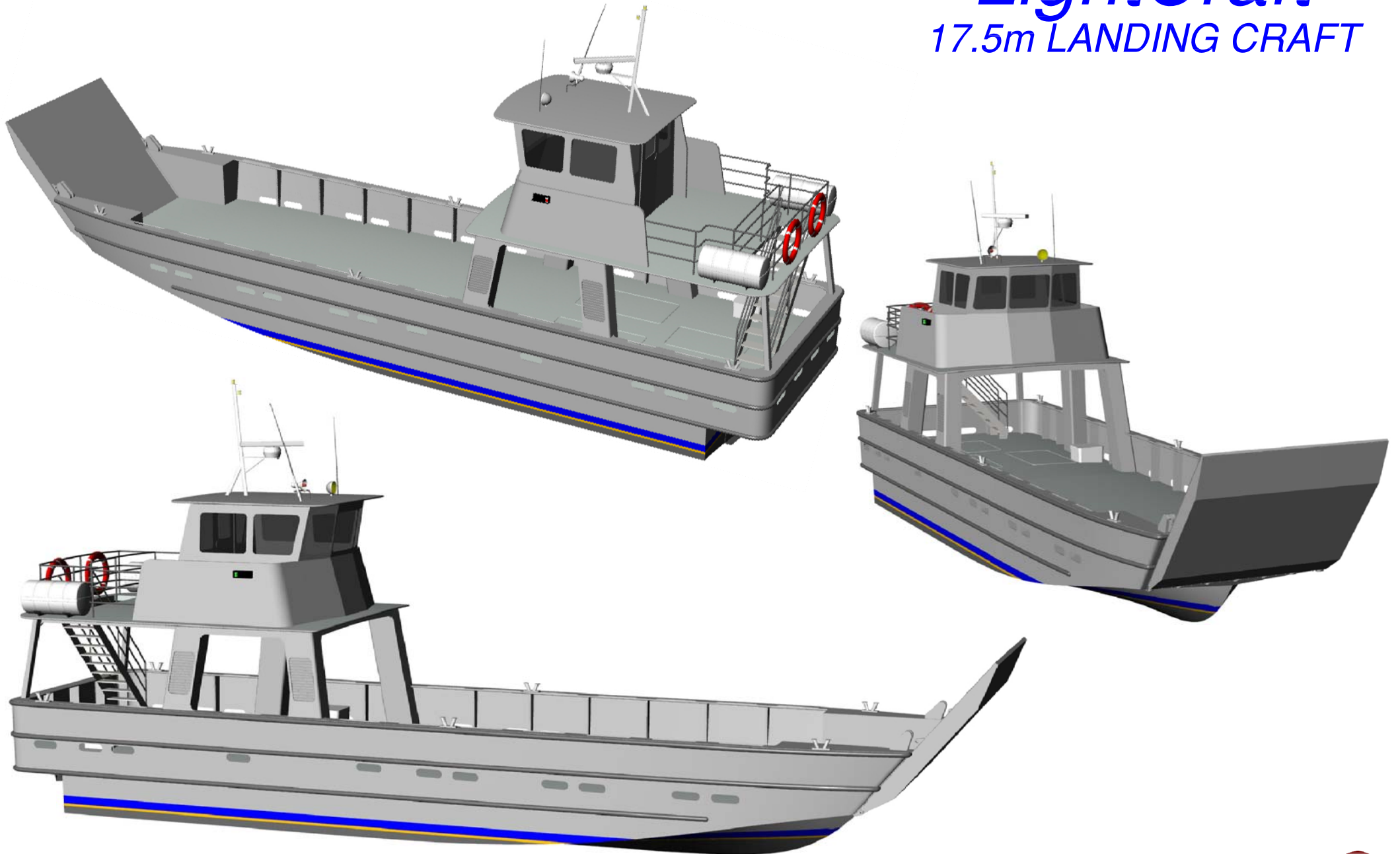


LightCraft

17.5m LANDING CRAFT

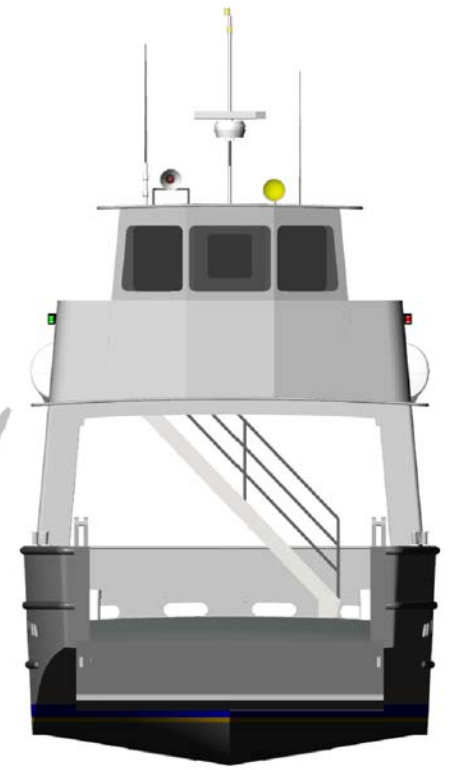
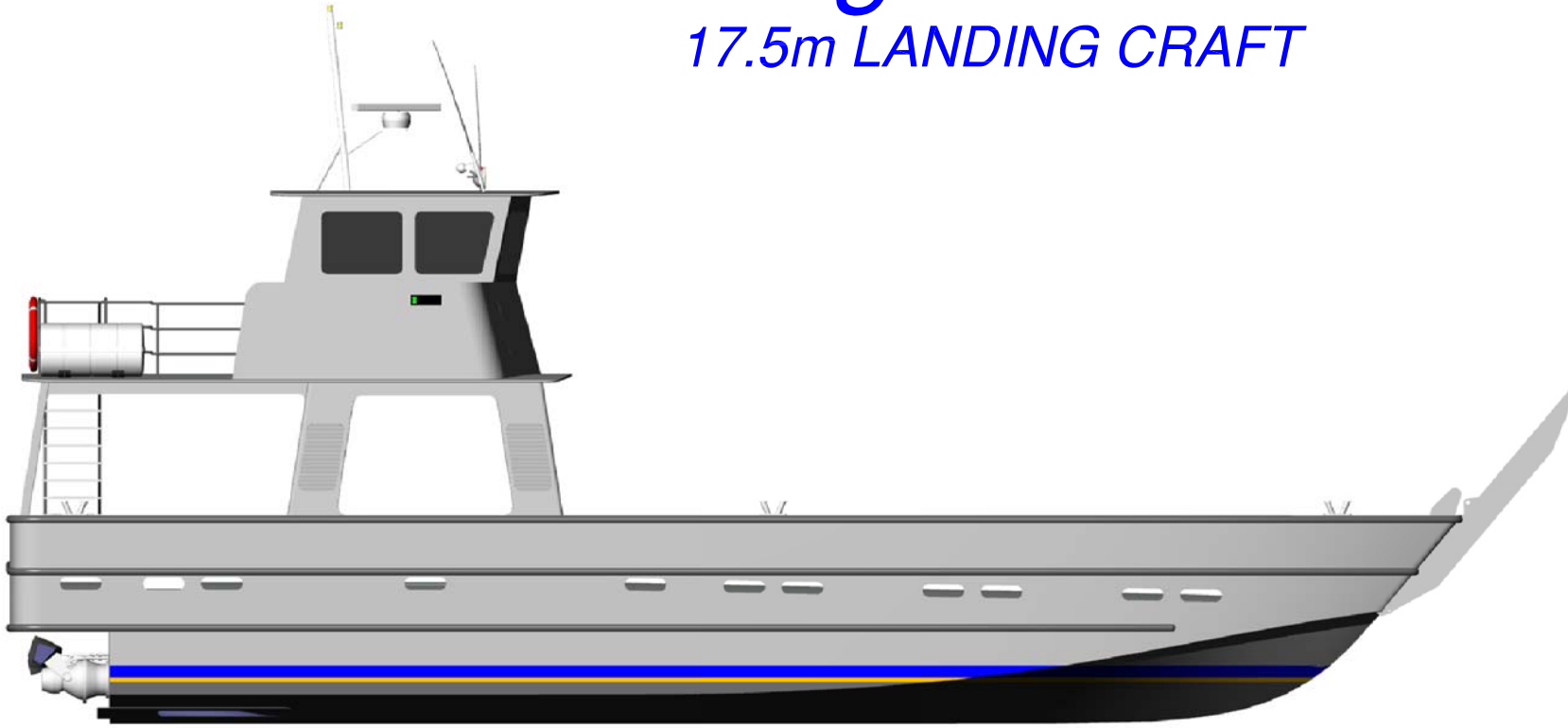


SCY Design
Consulting Naval Architects & Mechanical Engineers
48 Sweetgum St, Ashmore, Queensland 4214, Australia
Ph: 617 5597 3521 www.scy.net.au



LightCraft

17.5m LANDING CRAFT

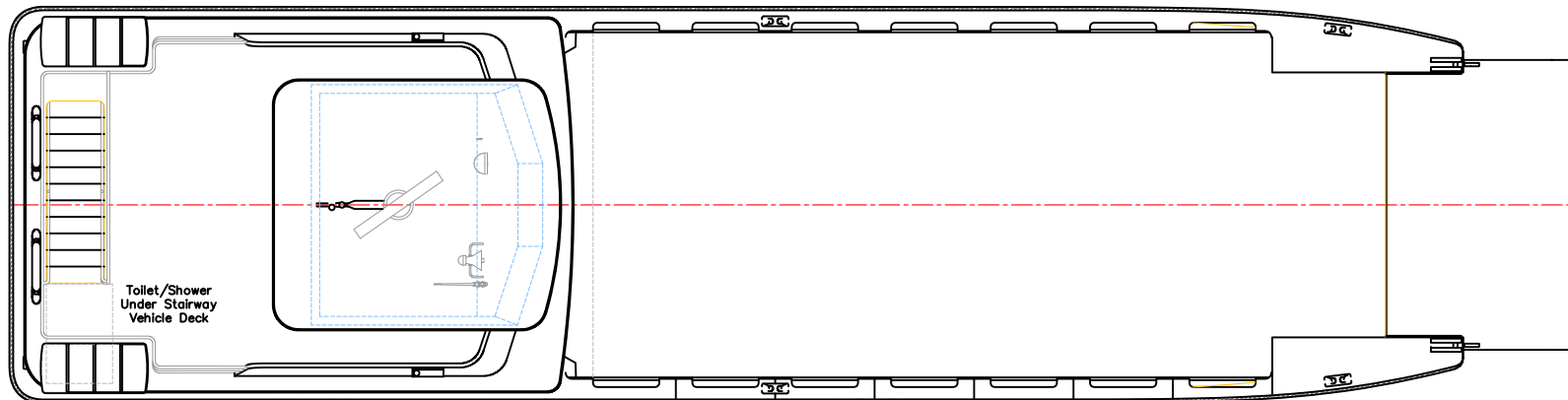
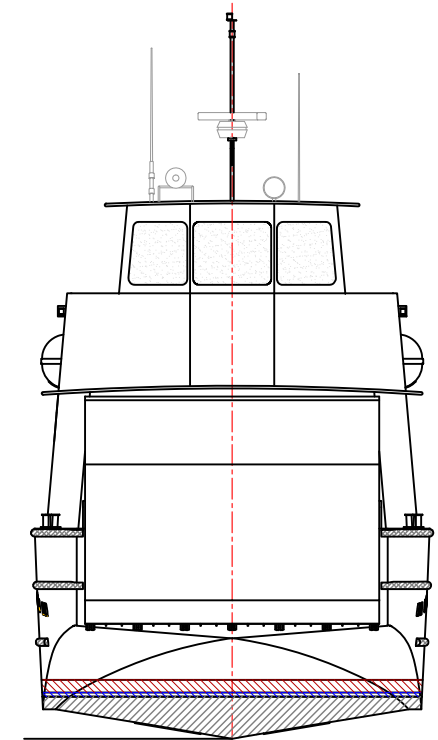
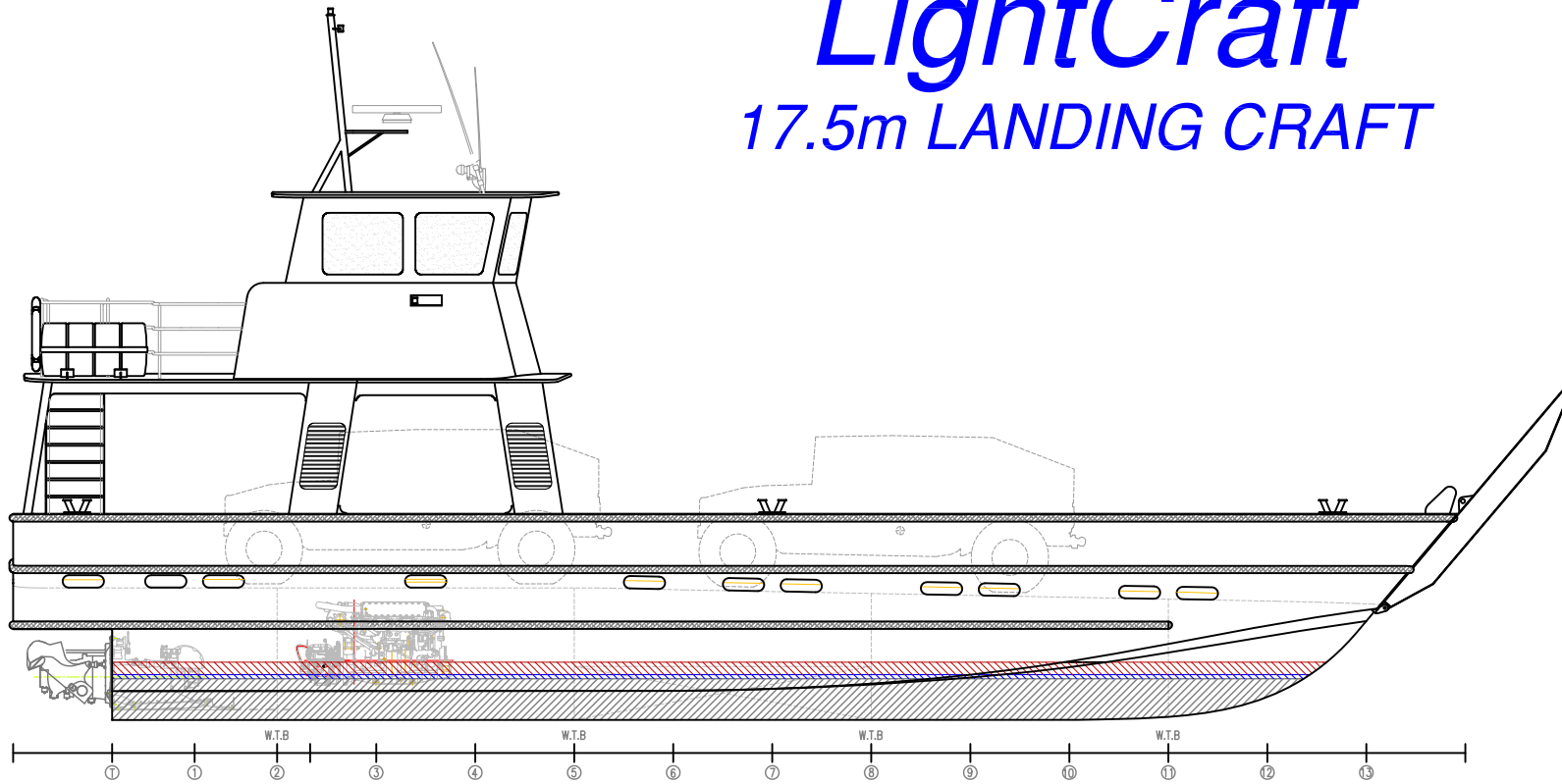


PRINCIPAL PARTICULARS	
LOA:	19.0m
Lmoulded:	17.5m
LWL:	14.5m
BEAM:	4.7m
DRAFT:	0.55m
FUEL:	3000Its
WATER:	3000Its
CLASS STANDARD:	DNV R3 PATROL
SURVEY:	USL 1B
CONSTRUCTION:	MARINE GRADE ALUMINIUM
DECK AREA:	65 m2
AXEL LOAD:	5 tonnes
PAYLOAD:	20 tonnes
CLEAR WIDTH:	3.2m
CLEAR HEIGHT:	2.3m
PASSENGERS:	20
CREW:	4



LightCraft

17.5m LANDING CRAFT



PRINCIPAL PARTICULARS

LOA:	19.0m
Lmoulded:	16.3m
LWL:	14.5m
BEAM:	4.7m
DRAFT:	0.77m (15.3t DWT)
FUEL:	2500lts
WATER:	300lts
MAIN ENGINES:	2 x Volvo D12-715 525kW @ 2300rpm
PROPULSION:	2 x Hamilton HJ403
SPEED:	27.1knots (8t DWT) 23.7knots (15.3t DWT)
CLASS STANDARD:	DNV R3 PATROL
SURVEY:	USL 1B
CONSTRUCTION:	MARINE GRADE ALUMINIUM
DECK AREA:	65 m2
AXEL LOAD:	5 tonnes
PAYLOAD max:	20 tonnes
CLEAR WIDTH:	3.2m
CLEAR HEIGHT:	2.3m
CREW:	2

LightCraft
aluminium workboats

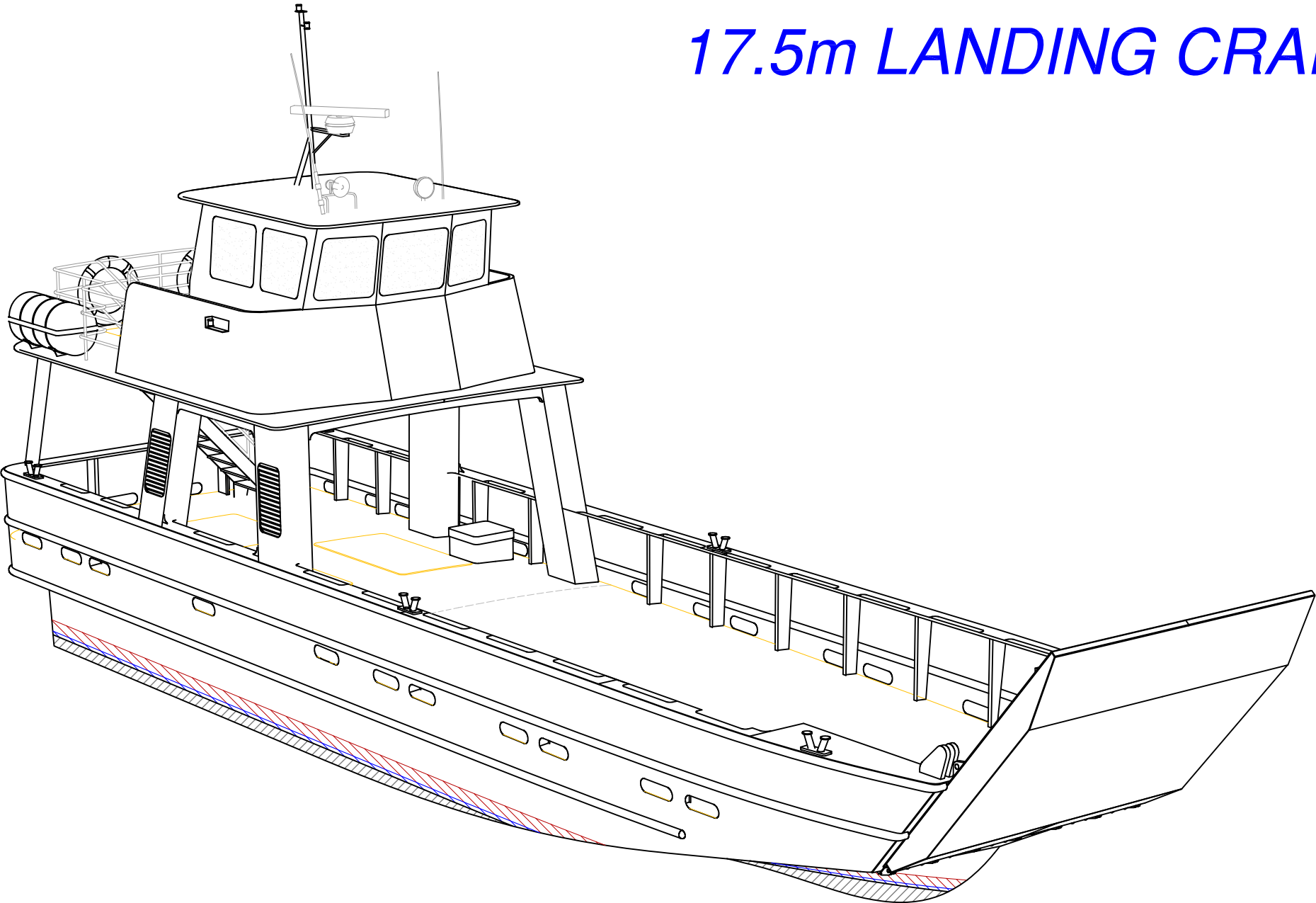
VESSEL: 17.5m LANDING CRAFT			
TITLE: GENERAL ARRANGEMENT			
DWG No: LC17.5-100	DATE: 20/3/2006	SCALE:	DRAWN: MDW

copyright ©

THIS DRAWING AND THE INFORMATION CONTAINED HEREON IS SUPPLIED ON THE UNDERSTANDING THAT IT IS THE EXCLUSIVE PROPERTY OF SOUTHPORT QUATOM YACHTS PTY. LTD. AND MUST NOT BE USED OR REPRODUCED IN WHOLE OR IN PART WITHOUT PERMISSION IN WRITING.

SCY Design
Consulting Naval Architects & Mechanical Engineers
48 Sweetgum St, Ashmore, Queensland 4214, Australia
Ph: 617 5597 3521 Fax: 617 5597 3529 www.scy.net.au

17.5m LANDING CRAFT



LightCraft
aluminium workboats

VESSEL: 17.5m LANDING CRAFT			
TITLE: 3D VIEW			
DWG No: LC17.5-100a	DATE: 20/3/2006	SCALE:	DRAWN: MDW
copyright ©			

SCY Design
Consulting Naval Architects & Mechanical Engineers
48 Sweetgum St, Ashmore, Queensland 4214, Australia
Ph: 617 5597 3521 www.scy.net.au

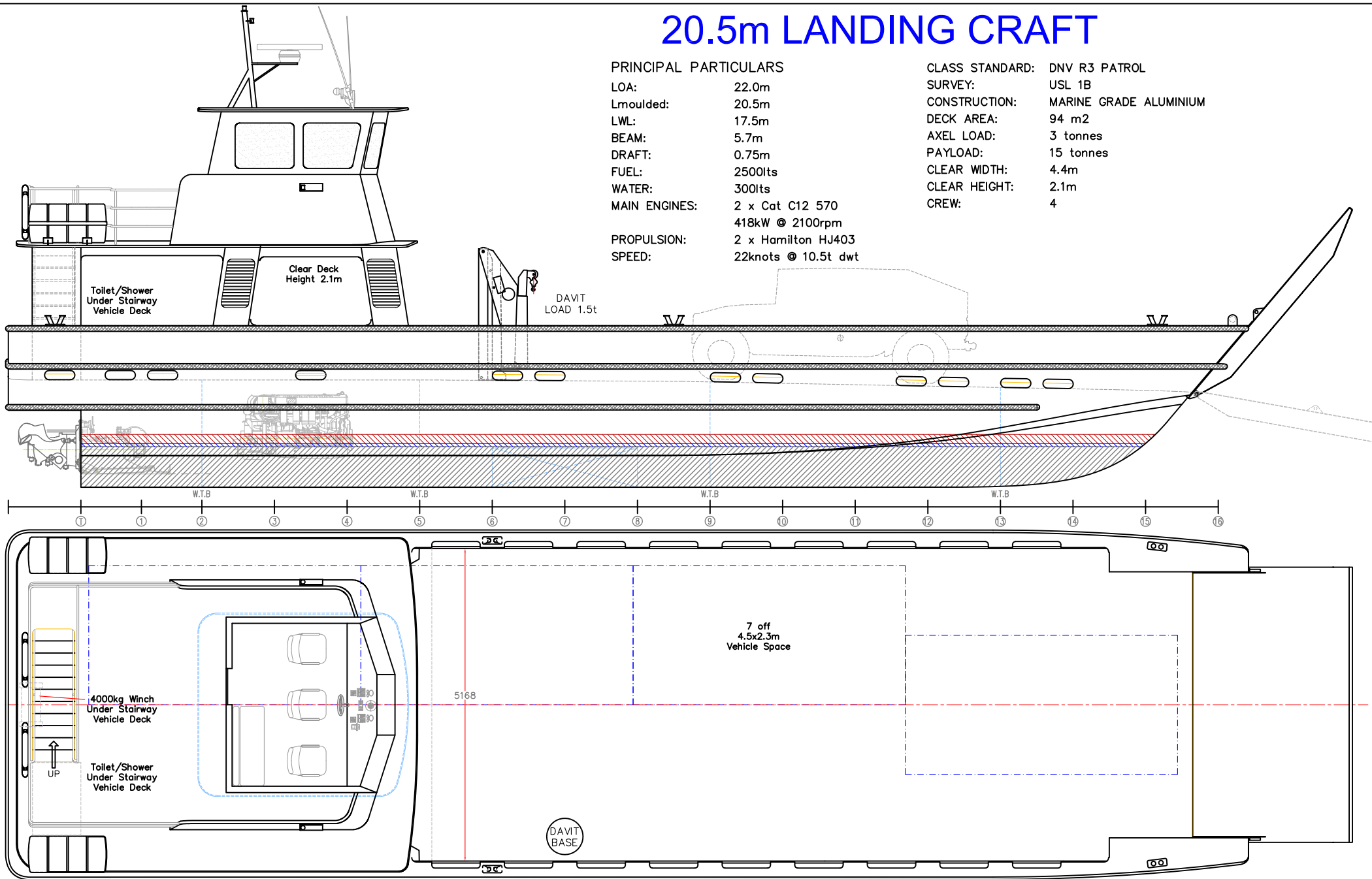
THIS DRAWING AND THE INFORMATION CONTAINED HEREON IS SUPPLIED ON THE UNDERSTANDING THAT IT IS THE EXCLUSIVE PROPERTY OF SOUTHPORT CUSTOM YACHTS PTY. LTD. AND MUST NOT BE USED OR REPRODUCED IN WHOLE OR IN PART WITHOUT PERMISSION IN WRITING.

20.5m LANDING CRAFT

PRINCIPAL PARTICULARS

LOA: 22.0m
 Lmoulded: 20.5m
 LWL: 17.5m
 BEAM: 5.7m
 DRAFT: 0.75m
 FUEL: 2500lts
 WATER: 300lts
 MAIN ENGINES: 2 x Cat C12 570
 418kW @ 2100rpm
 PROPULSION: 2 x Hamilton HJ403
 SPEED: 22knots @ 10.5t dwt

CLASS STANDARD: DNV R3 PATROL
 SURVEY: USL 1B
 CONSTRUCTION: MARINE GRADE ALUMINIUM
 DECK AREA: 94 m2
 AXEL LOAD: 3 tonnes
 PAYLOAD: 15 tonnes
 CLEAR WIDTH: 4.4m
 CLEAR HEIGHT: 2.1m
 CREW: 4



LightCraft
aluminium workboats

VESSEL: 20.5m LANDING CRAFT

TITLE: GENERAL ARRANGEMENT

copyright © THIS DRAWING AND THE INFORMATION CONTAINED HEREON IS SUPPLIED ON THE UNDERSTANDING THAT IT IS THE EXCLUSIVE PROPERTY OF SOUTHPORT CUSTOM YACHTS PTY. LTD. AND MUST NOT BE USED OR REPRODUCED IN WHOLE OR IN PART WITHOUT PERMISSION IN WRITING.

DWG No: LC20.5-100

DATE: 17/2/2010

SCALE:

DRAWN: MDW

SCY Design

Consulting Naval Architects & Mechanical Engineers

48 Sweetgum St, Ashmore, Queensland 4214, Australia
 Ph: 617 5597 3521 www.scy.net.au