

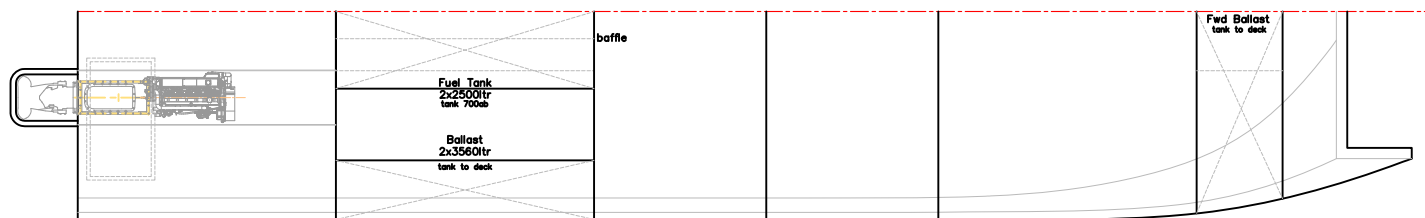
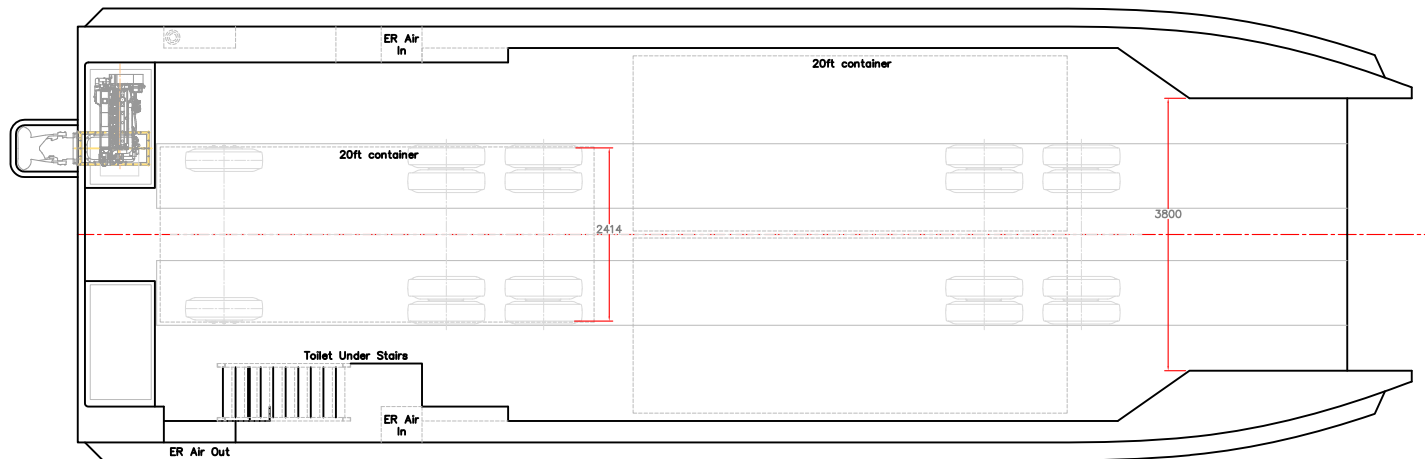
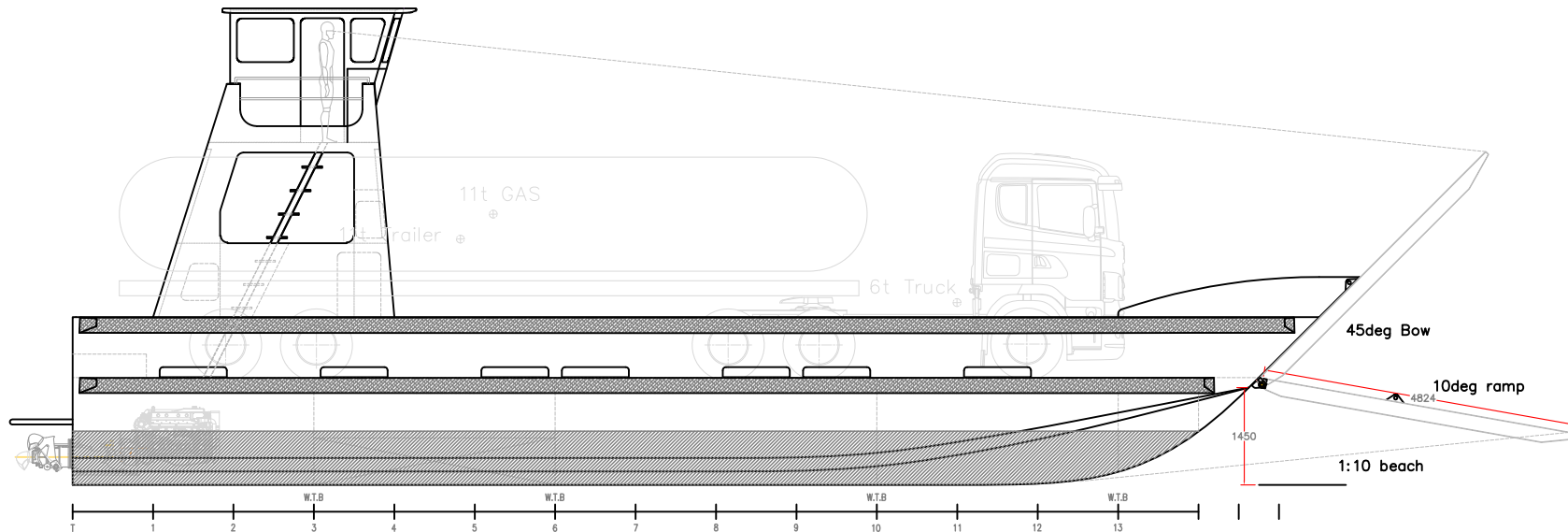
LightCraft

18.6m Landing Craft



SCY Design

48 Sweetgum St, Ashmore Qld 4214, Australia
Ph: (617) 5597 3521 www.scy.net.au



PRINCIPAL PARTICULARS

LOA:	20.5m
Lmoulded:	18.6m
LWL:	16.8m
BEAM:	5.8m
DRAFT:	1m (43t DWT)
FUEL:	2x2500lts
WATER:	200lts
MAIN ENGINES:	2 x Scania D109 072M 294kW (400hp) @ 2100rpm
GEARBOX:	ZF325-1
PROPULSION:	2 x Hamilton HJ403
STEER:	-
SURVEY:	NSCV 2C
CONSTRUCTION:	MARINE GRADE ALUMINIUM
DECK AREA:	80 m2
AXEL LOAD:	7 tonnes
DECK LOAD:	2 t/m2
PAYLOAD max:	60 tonnes (cg 0.75m above deck NSCV 2C)
CLEAR WIDTH:	3.8m
CLEAR HEIGHT:	3.4m
CREW:	-
DESIGN DISPL:	82t (NSCV2C)
DESIGN DISPL:	106t (300 freeboard)
SIDE WINDAGE:	71m2 (with truck on deck)

VESSEL: 18.6m LANDING CRAFT			
TITLE: PRELIM GENERAL ARRANGEMENT			
DWG No: LC18.6-100	DATE: 29/9/2011	SCALE:	DRAWN: MDW

SCY Design
Consulting Naval Architects & Mechanical Engineers
 48 Sweetgum St, Ashmore, Queensland 4214, Australia
 Ph: 617 5597 3521 www.scy.net.au

copyright ©

THIS DRAWING AND THE INFORMATION CONTAINED HEREON IS SUPPLIED ON THE UNDERSTANDING THAT IT IS THE EXCLUSIVE PROPERTY OF SOUTHPORT CUATOM YACHTS PTY. LTD. AND MUST NOT BE USED OR REPRODUCED IN WHOLE OR IN PART WITHOUT PERMISSION IN WRITING.