

LightCraft

12m Container Cat



SCY Design

48 Sweetgum St, Ashmore Qld 4214, Australia
Ph: (617) 5597 3521 www.scy.net.au

LightCraft

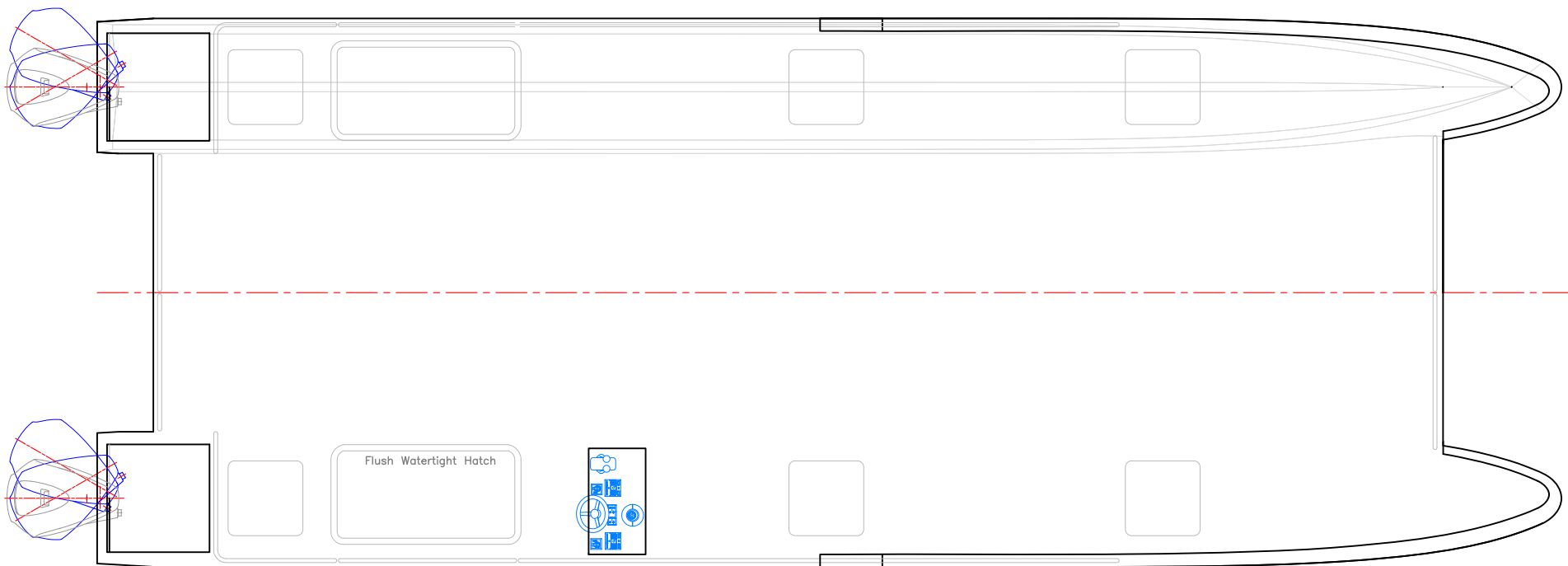
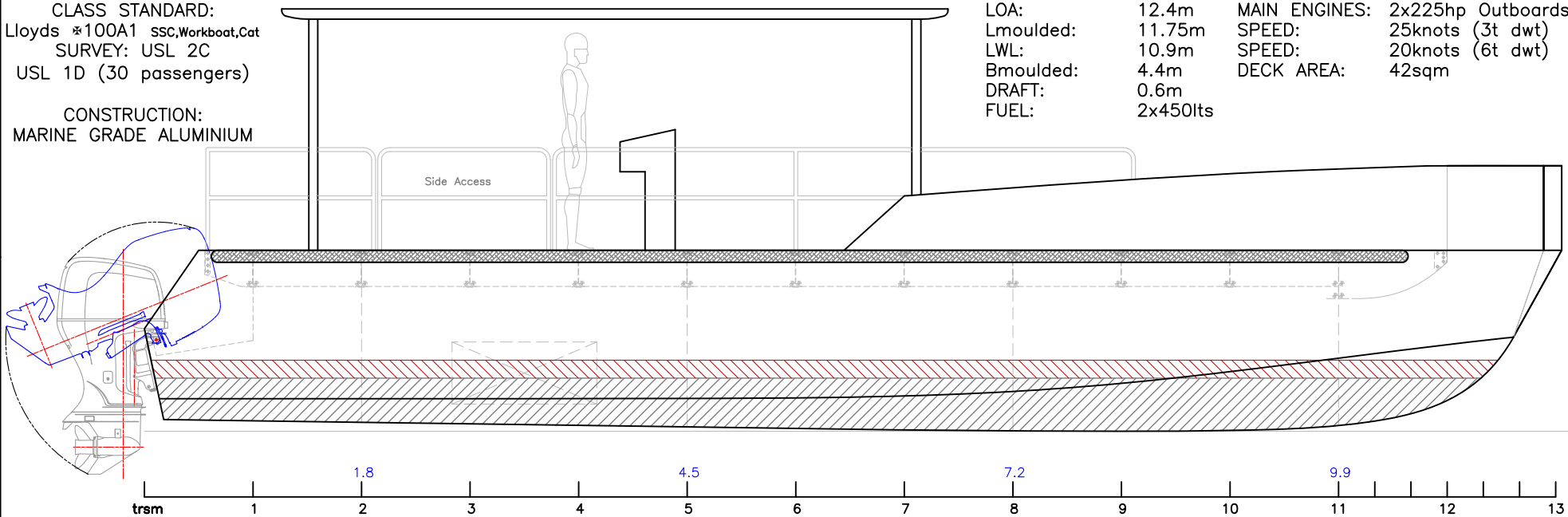
Aluminium Workboats

CLASS STANDARD:
Lloyds *100A1 SSC, Workboat, Cat
SURVEY: USL 2C
USL 1D (30 passengers)

CONSTRUCTION:
MARINE GRADE ALUMINIUM

LOA: 12.4m
Lmoulded: 11.75m
LWL: 10.9m
Bmoulded: 4.4m
DRAFT: 0.6m
FUEL: 2x450lts

MAIN ENGINES: 2x225hp Outboards
SPEED: 25knots (3t dwt)
SPEED: 20knots (6t dwt)
DECK AREA: 42sqm



VESSEL: 12m Container Cat
TITLE: General Arrangement
DWG No: 12CC-100
DATE: 4/3/2008
SCALE: 1:50 A4
DRAWN: MDW

SCY DESIGN
Consulting Naval Architects & Mechanical Engineers
48 Sweetgum St, Ashmore, Queensland 4214, Australia
Ph: 617 5597 3521 Fax: 617 5597 3529 www.mvdesign.net.au

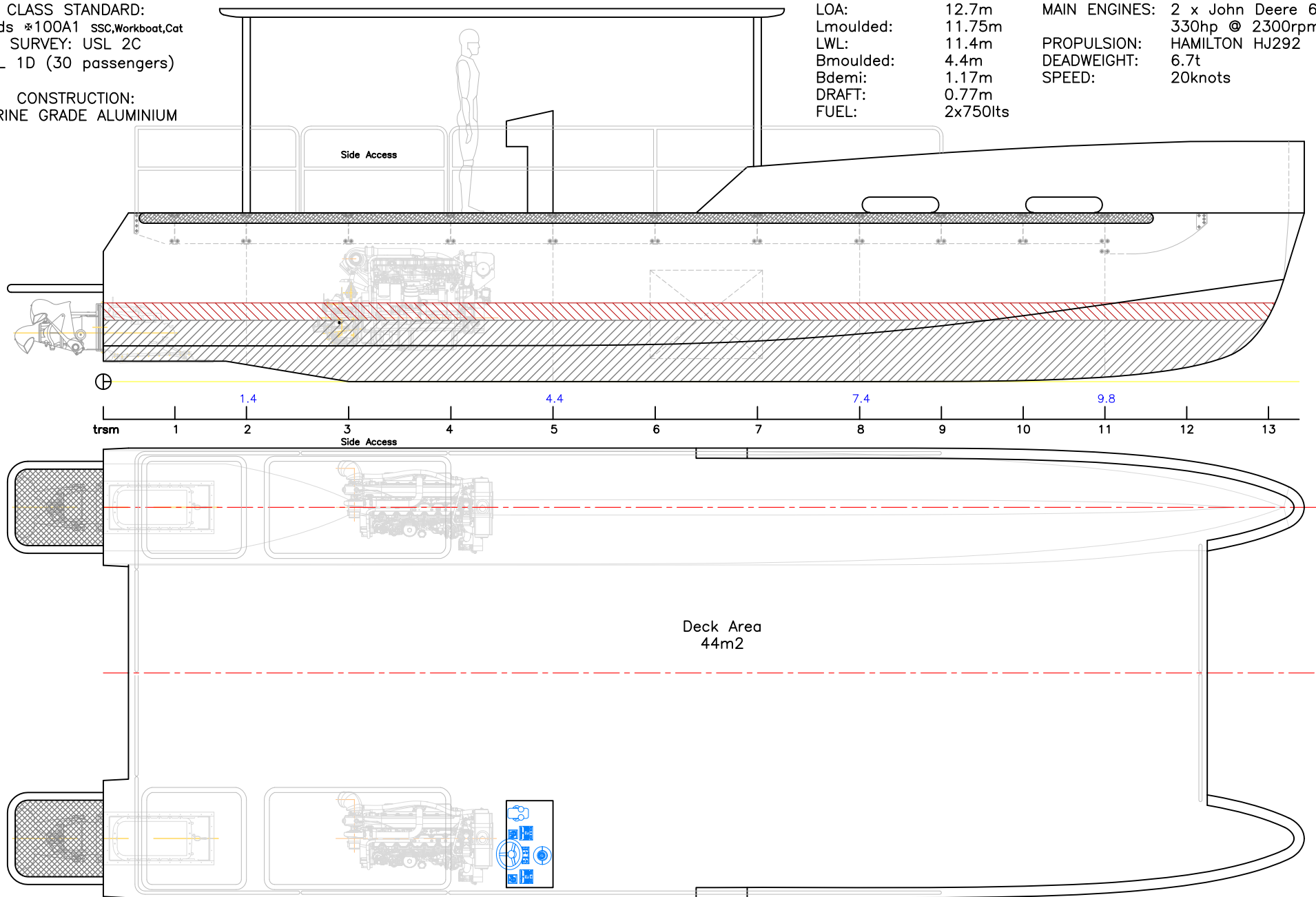
COPYRIGHT © THIS DRAWING AND THE INFORMATION CONTAINED HEREON IS SUPPLIED ON THE UNDERSTANDING THAT IT IS THE EXCLUSIVE PROPERTY OF SOUTHPORT CUSTOM YACHTS PTY. LTD. AND MUST NOT BE USED OR REPRODUCED IN WHOLE OR IN PART WITHOUT PERMISSION IN WRITING.

CLASS STANDARD:
Lloyds *100A1 SSC, Workboat, Cat
SURVEY: USL 2C
USL 1D (30 passengers)

CONSTRUCTION:
MARINE GRADE ALUMINIUM

LOA: 12.7m
Lmoulded: 11.75m
LWL: 11.4m
Bmoulded: 4.4m
Bdemi: 1.17m
DRAFT: 0.77m
FUEL: 2x750lts

MAIN ENGINES: 2 x John Deere 6081A
330hp @ 2300rpm
PROPULSION: HAMILTON HJ292
DEADWEIGHT: 6.7t
SPEED: 20knots



LightCraft
Aluminium Workboats

VESSEL: 12m Container Cat - WJ			
TITLE: General Arrangement			
DWG No: 12CC-100	DATE: 30/8/2010	SCALE: -	DRAWN: MDW

SCY DESIGN
Consulting Naval Architects & Mechanical Engineers
48 Sweetgum St, Ashmore, Queensland 4214, Australia
Ph: 617 5597 3521 Fax: 617 5597 3529 www.mwdesign.net.au

COPYRIGHT © THIS DRAWING AND THE INFORMATION CONTAINED HEREON IS SUPPLIED ON THE UNDERSTANDING THAT IT IS THE EXCLUSIVE PROPERTY OF SOUTHPORT CUSTOM YACHTS PTY. LTD. AND MUST NOT BE USED OR REPRODUCED IN WHOLE OR IN PART WITHOUT PERMISSION IN WRITING.